

CRAFTSMAN®

P R O F E S S I O N A L

71 85740

**Easy-To-Load Metal Head
for most Gas Trimmers and Brushcutters
XQ spiral shape trimmer line improves energy
efficiency and reduces noise**

**Pre-cut and Pre-Formed Line Sizes Included!
Replaceable E-Z LOAD Glide Plate™**

Commercial Grade

Hassle-Free III™ Trimming System

**CONTENTS: 1 TRIMMER HEAD, 3 RED MEDIUM TRIMMER LINES (71-85908),
2 BLACK LARGER TRIMMER LINES (71-85909)**

Hassle-Free™ Head - Bag Content List

See other side for your trimmer reference number.

GREEN BAG (washers)

REF. #	WASHER SIZE TO FIT SHAFT	
DE44	3/8" (Inner Diameter)	7/8"(Outer Diameter) securing washer
DE46	5/16" (Inner Diameter)	centering washer
DE47	3/8" (Inner Diameter)	centering washer
DE48	10 mm (Inner Diameter)	centering washer

ORANGE BAG (nuts)

REF. #	NUT SIZE TO FIT SHAFT	NUT COLOR
DE01	3/8" x 24 LH Nut	Yellow
DE02	5/16" x 24 RH Flange Nut	Silver
DE03	3/8" x 24 RH Nut	Silver
DE04	7/16" x 20 RH Nut	Silver

BLUE BAG (nuts & bolt)

REF. #	NUT/BOLT SIZE TO FIT SHAFT	NUT COLOR
DE05	10mm x 1.25 LH Nut	Yellow
DE06	8mm x 1.25 RH Nut	Silver
DE07	10mm x 1.0 LH Nut	Black
DE08	10mm x 1.5 LH Nut	Silver
DE14	8mm x 1.25 LH Nut	Yellow
DE34	8mm x 1.25 x 22 LH Bolt	Yellow

If you have Sears model number 79142, 79516, 79518, 79609, 79610, 79629, use the adaptor nut that came with the original trimmer.
If you have lost that nut and require a new one, call 1-602-276-8009.

glide plate
(if applicable)

Continued from other side.

TRIMMER MODEL	REF#
TAS TBC23, TBC23F, TBC30	DE14-B
HD180, PARLANDER, NC301, TBC-16	DE34-B
TBC-20, TBC-30F, TBC30R, TBC37	
QUM2, SUM3	DE05-B
TMC 1800,2400,3300,3350	DE34-B
TML 2856	DE34-B
TORO TC1000, TC2000	DE03-O
1000, 2000, 30900, 30920, 51628, 51645, 51650	DE05-B
51660, CL700, CL2100, CL30900, CL30901	
CL30920, TC300, TC350, TC400, TC600, TC650	
TC700, TC800, TC2100, TC3000, TC3100	
TC3500, TC4000, TC5000, TC1000, TC2000	
51550, 51603, 51604, 51606, 51607, 51608	
TURF POWER 740TP, 780TP	DE05-B
VANDERMOLEN L3335G	DE34-B
L184F/G, L335G, L2035G, L/X1845E/G	DE05-B
L/X2415E/G, X3335E/G	
WEEDEATER FEATHERLITE, GT117, GT117E, GT117LE	DE02-O
HP22, HP22T, HP30T, LT7000, LT7500, XT20T	
XT25, XT40, XT40T	
GT119, GT119T, HP30SB, HP30SBP, TBC57	DE01-O
XR125, XT20, XT50, XT85, XT90, XT100,	
XT125, XT125B, XT125KT, XT125T, XT125TR	
TBP57, YARD PRO 105, 140, 145, HP305B	
HP305BP, BC3100	DE03-O
85, 100, 125, 125B, 165, 175, 185, 195, 500, 507	
559, 587, 599, 600, 607, 608, 609, 1400, 1400T	
1500, 1600, 1600T, 1700, 1700A, 1740, 3500	
GT115, GT115-T, GT116, GT117C, GT117T	
GT118, GT118B, GT118KT, GT118T, GT119	
GT152, GTI-15, 17, 18, 18B, SUPER 16, PRO-LITE	
PRO-LITE PLUS, PRO Series: 111, 112, 114, 115	
117, PRO TRIM, ULTRA TRIM, WEEDY 2215	
XR Series: 20, 20T, 30, 50, 50A, 50S, 70, 75, 80	
80A, 85, XT Series: 20, 35, 50T, 80, 85, 85T, 100	
115, 120, 125, 125B, 130A, YARD PRO Series:	DE04-O
110, 115, 116, 120, 120A, 130, 130A, 145	
650, 657, 670, 707, 978, 3500 Later Models:	DE05-B
650, 657, 670, 707, 978, 979, 3500, XR95	DE08-B
PRO-150, PRO-200, YP140	
609, 1000, GT119, GT119T, PRO100, PRO105	
PRO150, PRO160, PRO195, PRO200, XR90	
XR95, XR100, XR105, XR125, XR200, XR801A	
YP-140 (OLDER MODELS)	
WESTMAC 16, 23, 31	DE34-B
WINDMILL AM SERIES	DE34-B
XENOA BC15, FBC12, FDC26	DE34-B
YAZOO TBC31, YBC16, YBC23, YBC31	DE34-B

DE44	3/8" (Inner Diameter)	7/8"(Outer Diameter) securing washer
DE46	5/16" (Inner Diameter)	centering washer
DE47	3/8" (Inner Diameter)	centering washer
DE48	10 mm (Inner Diameter)	centering washer

ORANGE BAG (nuts)

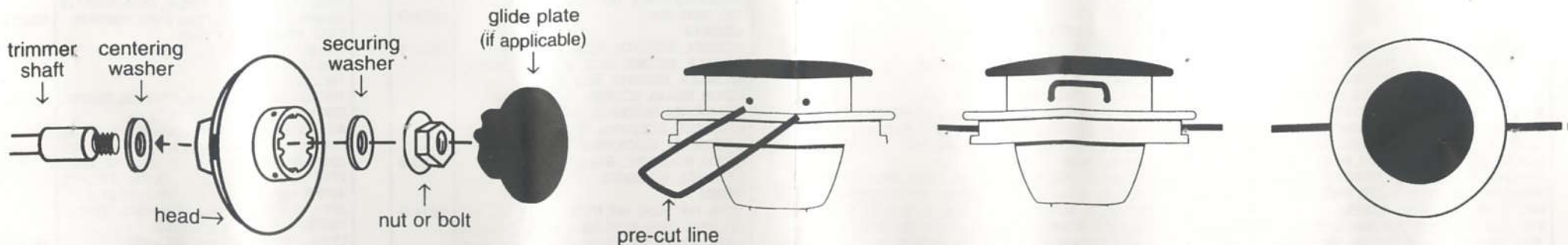
REF. #	NUT SIZE TO FIT SHAFT	NUT COLOR
DE01	3/8" x 24 LH Nut	Yellow
DE02	5/16" x 24 RH Flange Nut	Silver
DE03	3/8" x 24 RH Nut	Silver
DE04	7/16" x 20 RH Nut	Silver

BLUE BAG (nuts & bolt)

REF. #	NUT/BOLT SIZE TO FIT SHAFT	NUT COLOR
DE05	10mm x 1.25 LH Nut	Yellow
DE06	8mm x 1.25 RH Nut	Silver
DE07	10mm x 1.0 LH Nut	Black
DE08	10mm x 1.5 LH Nut	Silver
DE14	8mm x 1.25 LH Nut	Yellow
DE34	8mm x 1.25 x 22 LH Bolt	Yellow

TC1000, TC2000 1000, 2000, 30900, 30920, 51628, 51645, 51650 51660, CL700, CL2100, CL30900, CL30901 CL30920, TC300, TC350, TC400, TC600, TC650 TC700, TC800, TC2100, TC3000, TC3100 TC3500, TC4000, TC5000, TC1000, TC2000 51550, 51603, 51604, 51606, 51607, 51608	DE03-O DE05-B
TURF POWER 740TP, 780TP	DE05-B
VANDERMOLEN L3335G L184F/G, L335G, L2035G, L/X1845E/G L/X2415E/G, X3335E/G	DE34-B DE05-B
WEEDEATER FEATHERLITE, GT117, GT117E, GT117LE HP22, HP22T, HP30T, LT7000, LT7500, XT20T XT25, XT40, XT40T GT119, GT119T, HP30SB, HP30SBP, TBC57 XR125, XT20, XT50, XT85, XT90, XT100, XT125, XT125B, XT125KT, XT125T, XT125TR TBP57, YARD PRO 105, 140, 145, HP305B HP305BP, BC3100 85, 100, 125, 125B, 165, 175, 185, 195, 500, 507 559, 587, 599, 600, 607, 608, 609, 1400, 1400T 1500, 1600, 1600T, 1700, 1700A, 1740, 3500 GT115, GT115-T, GT116, GT117C, GT117T GT118, GT118B, GT118KT, GT118T, GT119 GT152, GTI-15, 17, 18, 18B, SUPER 16, PRO-LITE PRO-LITE PLUS, PRO Series; 111, 112, 114, 115 117, PRO TRIM, ULTRA TRIM, WEEDY 2215 XR Series; 20, 20T, 30, 50, 50A, 50S, 70, 75, 80 80A, 85, XT Series; 20, 35, 50T, 80, 85, 85T, 100 115, 120, 125, 125B, 130A, YARD PRO Series; 110, 115, 116, 120, 120A, 130, 130A, 145 650, 657, 670, 707, 978, 3500 Later Models; 650, 657, 670, 707, 978, 979, 3500, XR95 PRO-150, PRO-200, YP140 609, 10C0, GT119, GT119T, PRO100, PRO105 PRO150, PRO160, PRO195, PRO200, XR90 XR95, XR100, XR105, XR125, XR200, XR801A YP-140 (OLDER MODELS)	DE02-O DE01-O DE03-O
WESTMAC 16, 23, 31	DE04-O
WINDMILL AM SERIES	DE05-B DE08-B
XENOA BC15, FBC12, FDC26	DE04-B
YAZOO TBC31, YBC16, YBC23, YBC31	DE34-B

If you have Sears model number 79142, 79516, 79518, 79609, 79610, 79629, use the adaptor nut that came with the original trimmer.
If you have lost that nut and require a new one, call 1-602-276-8009.



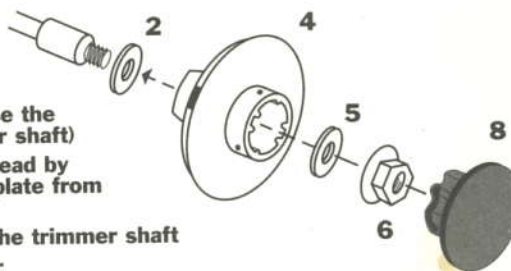
Hassle-Free III™ Trimming System

71 85740

Fits Most Gas Trimmers and Brushcutters

BASIC HEAD INSTALLATION

1. Remove old trimmer head
2. Install centering washer (use the size that snugly fits trimmer shaft)
3. Disassemble Hassle Free Head by removing and pulling glide plate from metal head
4. Fit Hassle-Free head onto the trimmer shaft
5. Install the assembly washer
6. Choose correct nut for trimmer shaft
7. Tighten the nut to moderate tightness using socket wrench
8. Replace E-Z Load Glide Plate
9. Insert trimmer line into appropriate hole



LINE INSTALLATION



Choose the line size best suited to the job at hand and insert thru the appropriate holes in the trimmer head



Push both ends thru until the line is snug against the hub



Make sure line is tight against hub and extended fully thru positioning tunnel. (Correctly installed line will be the same length on both ends.)

For Sears Model Numbers: Reference selector chart for compatibility with sears trimmers

Make Safety First!

- **ALWAYS** turn off engine and remove spark plug wire or electrical cord before replacing line
- **ALWAYS** wear eye, face and body protection when operating your trimmer
- **DO NOT** operate trimmer if others are within 50 feet

See the full line of Craftsman® products at craftsman.com

Contents Made in USA
Distributed by Sears Brands Management Corporation
Hoffman Estates, IL 60179

Pat. No. 5,871,091 and 6,035,618

