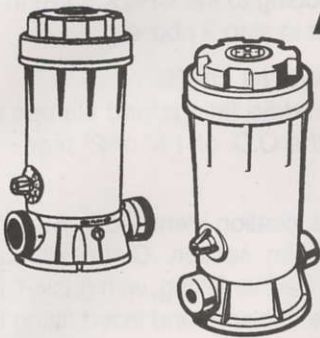


INSTALLATION GUIDE AND OPERATING INSTRUCTIONS



AUTOMATIC CHLORINE FEEDERS

HAYWARD CL100/110 SERIES

HAYWARD CL200/220 SERIES



NSF listed for swimming pool use.

I) IMPORTANT SAFETY INSTRUCTIONS

⚠ This is the safety alert symbol. When you see this symbol on your system or in this manual, look for one of the following signal words and be alert to the potential for personal injury.

⚠ DANGER indicates an imminently hazardous situation which, if not avoided, will result in death, serious personal injury, or major property damage.

⚠ WARNING indicates a potentially hazardous situation which, if not avoided, could result in death, serious personal injury, or major property damage.

NOTICE indicates special instructions not related to hazards.

Carefully read and follow all **Safety Instructions** in this Installation Guide and on equipment. Keep safety labels in good condition: replace if missing or damaged.

⚠ DANGER

READ AND FOLLOW ALL INSTRUCTIONS

- Use only 3" diameter slow dissolving Trichloro-S-Triazinetrione Chlorine tablets.
- Never use fast dissolving Trichloro-S-Triazinetrione Chlorine tablets.
- Never mix chemicals as it may cause fire and/or an explosion.
- Never mix Trichloro-S-Triazinetrione Chlorine tablets with Calcium Hypochlorite, or with any other form of concentrated chlorine or other chemicals. Fire and/or explosion may result.
- Never add any other types of chlorine, pH adjusters, shock treatments or algaecides through the skimmer. If these products must be used, they should be added directly into the pool water.
- Never isolate chlorine feeder with valves or other devices.

⚠ WARNING

- Read and follow all Safety Instructions prior to operating or servicing this chlorine feeder.
- To reduce the risk of injury, do not permit children to use this product.
- Wear eye and skin protection while maintaining or servicing this unit.
- Do not inhale fumes from the chlorinator or chemical container.
- Chlorine feeder may be under pressure. Use caution removing cover.

SAVE THESE INSTRUCTIONS

II) INSTALLATION

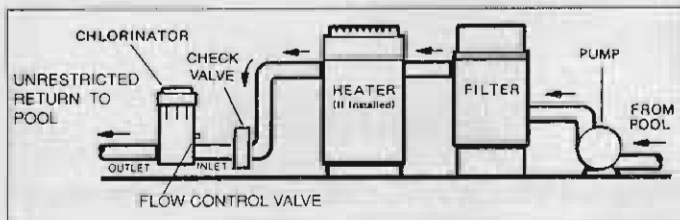
CL100/200

1. Your **CL100/200** automatic chlorine feeder is designed for permanent installation in the pool water return line.
2. Always install the chlorine feeder **after** the heater. If there is no heater, install **after** the filter. Damage to the heater or filter may result if concentrated chlorine is allowed to flow through them. An in-line positive seal corrosion resistant check valve should be installed to reduce backflow of chlorine gas when the system is shut off. If the chlorine feeder is located below water level, you may want to install a check valve to prevent water backflow when operating/servicing the unit. The CL100 has this feature built in.
3. The **CL100/200** is furnished with 1½" female threads. If PVC socket (solvent weld) connections are desired, order SP1500UNPAK2 socket flush union end connectors package. For threaded male and union connectors, order SP1500UNMPAK1 male union connector package (two required). Thread or socket adapters may also be used. Only use pipe sealants formulated and approved for use with

ABS plastic connections (e.g. Teflon Tape, Permatex Form-A-Gasket No. 2, Laco Plasto-Joint stick). Do not overtighten pipe fitting. Proper fitting makeup is hand tight plus 1 to 1½ turns maximum.

NOTICE: After starting up system, re-check all connections for leaks. Re-tighten as required. Use of CL200BS base supplied with the CL200 chlorinator is optional.

4. Refer to **Section III DIRECTIONS FOR USE.**

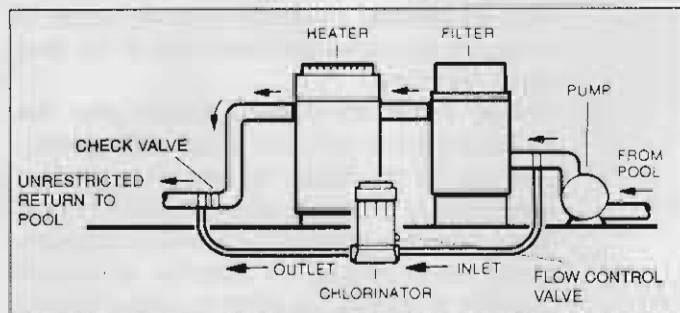


NOTE: Never install chlorine feeder directly into copper plumbing as pipe damage may occur. If you have brass or bronze backwash valves, or other sensitive metallic components, consult your dealer for precautions or recommendations for your particular system.

CL110/220

A. PLANNING INSTALLATION

1. The inlet connection should be made in the piping after the pump and before the filter. Mark location on pipe.
2. The outlet connection should be made in the piping after the heater. If no heater is being used, connection should be made after the filter. Mark location on pipe.
3. Based on the locations from steps. No. 1 and No. 2, cut tubing to required lengths. Be sure ends are cut evenly and cleanly.



NOTE: Never install chlorine feeder directly into copper plumbing as pipe damage may occur. If you have brass or bronze backwash valves, or other sensitive metallic components, consult your dealer for precautions or recommendations for your particular system.

B. CONNECTION TO CHLORINATOR

1. Wrap Teflon tape on larger male thread of Check Valve and thread it securely into outlet port of chlorinator.

NOTICE: The Check Valve is marked with a "dot". It also has a ball that "clicks" when you shake it.

2. Wrap Teflon tape on larger male thread of the Inlet Fitting Adapter and thread it securely into the inlet port of chlorinator.
3. To connect inlet tubing to chlorinator, place

Compression Nut over inlet tubing and slide nut up about 2". Insert the tubing all the way into the Inlet Fitting Adapter socket and, holding tubing in place, tighten nut firmly by hand. Do not overtighten.

4. Connect outlet tubing to the Check Valve in the same manner as in step 3 above.

C. CONNECTION TO PLUMBING LINES

NOTICE: The saddle fittings and clamps are designed to fit the O.D. of 1½" or 2" pipe.

5. Drill a 3/8" hole at location identified in Step 1 of Planning Installation section. Clean all burrs, shavings etc. Fit Saddle Fitting, with gasket, into oval shaped hole in clamp and insert fitting into the 3/8" hole. Secure clamp around Saddle Fitting, gasket and pipe and tighten securely to achieve a good seal. Do not overtighten clamp.
6. Drill a 3/8" hole at location identified in Step 2 of Planning Installation section. Install Saddle Fitting as in Step 5 above.
7. Connect inlet and outlet tubing to the Saddle Fittings with Compression Nuts as in Step 3 above. Do not overtighten.

NOTICE: After starting up system, re-check all connections for leaks. Re-tighten as required.

III) DIRECTIONS FOR USE

GENERAL

Before using your chlorinator, your pool/spa water should be properly balanced and conditioned and should have a chlorine residual of approximately 1.0 to 1.5 ppm. Follow dealer and chemical manufacturer's directions and instructions.

Check chlorine residual daily and adjust the dial valve for more or less chlorine. The chlorine demand for pools and spas varies based on usage, temperature, sunlight, etc. Initially, you'll have to experiment to determine the proper amount of chlorine and the correct valve setting required for your pool and filter time cycle. Follow chemical manufacturer's instructions for proper chlorine level.

REFILLING CHLORINATOR

⚠ DANGER

- Use only 3" diameter slow dissolving Trichloro-S-Triazinetrione Chlorine tablets.
- Never use fast dissolving Trichloro-S-Triazinetrione Chlorine tablets.
- Never mix chemicals as it may cause fire and/or an explosion.
- Never mix Trichloro-S-Triazinetrione Chlorine tablets with Calcium Hypochlorite, or with any other form of concentrated chlorine or other chemicals. Fire and/or explosion may result.
- Never add any other types of chlorine, pH adjusters,

shock treatments or algaecides through the skimmer. If these products must be used, they should be added directly into the pool water.

- Never isolate chlorine feeder with valve or other devices.

⚠ WARNING

- Read and follow all Safety Instructions prior to operating or servicing this chlorine feeder.
- To reduce the risk of injury, do not permit children to use this product.
- Wear eye and skin protection while maintaining or servicing this unit.
- Do not inhale fumes from the chlorinator or chemical container.
- Chlorine feeder may be under pressure. Use caution removing cover.

1. Shut off all pumps and pump timers.
2. Turn chlorine feeder flow control valve to "OFF".
3. Verify chlorine feeder return line to pool is unrestricted.
4. Wait one minute to relieve system pressure before attempting to remove cover.
5. Remove cover.
6. Refill chlorine feeder only with 3" diameter slow dissolving Trichloro-S-Triazinetrione Chlorine Tablets.
7. Secure cover to chlorine feeder.
8. Turn flow control valve to desired setting and restart pump.

IV) MAINTENANCE

A) TO CHANGE O-RING

CL100/110

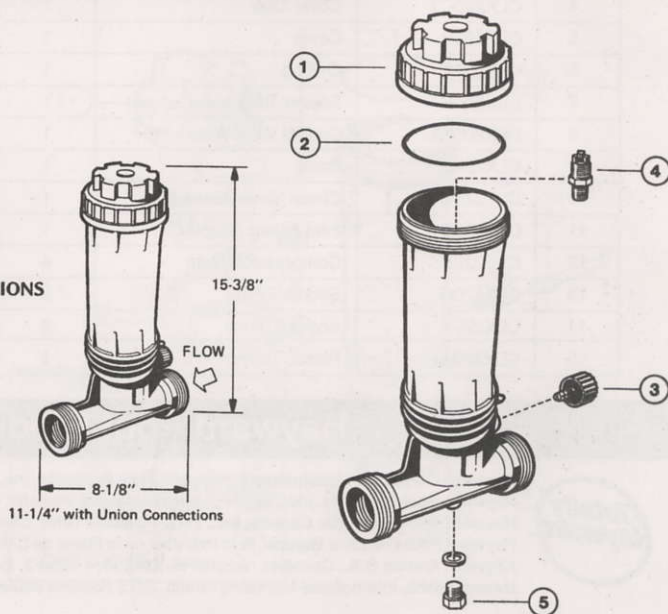
1. Read and follow instructions in Steps 1 to 5 in Refilling Chlorinator section.
2. Remove the O-Ring and replace with a Hayward replacement O-Ring (part no. CLX110K).
3. Replace cover. If chlorinator needs to be refilled, read and follow instructions in Steps 6 to 8 in Refilling chlorinator section.

PARTS FIGURES AND DIAGRAMS

CL100 FEEDER

REF NO.	PART NUMBER	DESCRIPTION	NO. REQ'D
1	CLX110C	Cover	1
2	CLX110K	O-Ring	1
3	CLX110FA	Control Knob Assembly	1
4	CLX220CV	Check Valve Assembly	1
5	SPX1700FGV	Drain Plug w/Gasket	1

DIMENSIONS



CL200/220

1. Read and follow instructions in Steps 1 to 5 in Refilling Chlorinator section.
2. Pry off Logo Cap, located on the cover of the chlorinator. Unscrew and remove retainer screw. Cover may now be slipped free of the Cover Cap.
3. Replace O-ring with a Hayward replacement O-ring (part no. CLX200K). Reassemble being sure Slip Washers are in place on stem of Cover (inside), and under head of Retaining Screw.
4. Replace cover. If chlorinator needs to be refilled, read and follow instructions in Steps 6 to 8 in Refilling Chlorinator section.

B) TO REMOVE FLOW CONTROL VALVE HANDLE

Set pointer to FULL. Insert screwdriver in slot opposite pointer, lift up and rotate handle counterclockwise. This allows the handle index lock tab to clear the body ridge.

C) WINTERIZING

Where freezing temperatures can be expected, drain all water from chlorinator. (For in-line permanently installed unit remove drain plug). Carefully remove undissolved tablets, and rinse out chlorinator thoroughly with water. Replace cover and drain plug.

D) VACUUMING

When vacuuming, close flow control valve to prevent bypass of sediment and possible clogging of control valve.

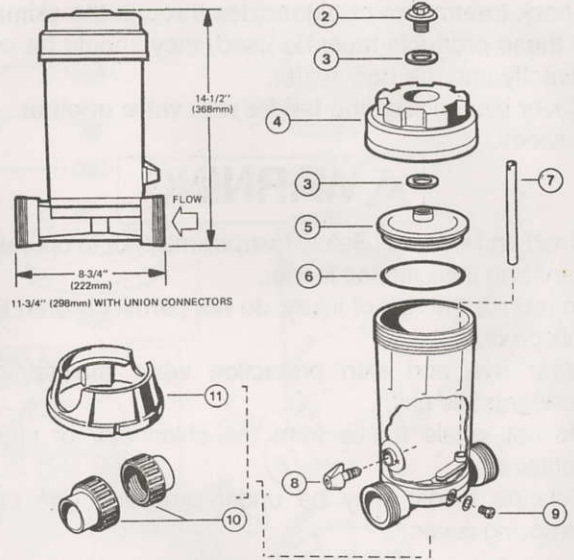
E) LUBRICATION

Never use petroleum type lubricants on Cover O-Ring. To lubricate use Jack's No. 327 lube only.

CL200 SERIES

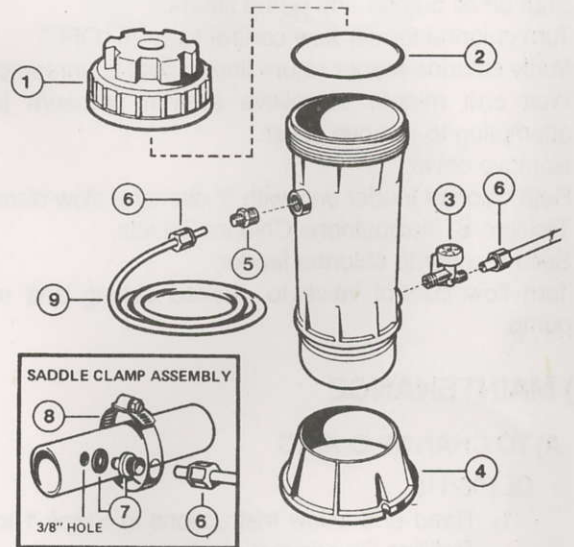
REF NO.	PART NUMBER	DESCRIPTION	NO. REQ'D
1	CLX200E	Logo Cap	1
2	CLX200G	Cover Retaining Screw	1
3	CLX200W	Slip Washer	2
4	CLX200C	Cover Cap	1
5	CLX200B	Cover	1
6	CLX200K	O-Ring	1
7	CLX200H	Feeder Tube (some models)	1
8	CLX200PA	Control Valve Assembly	1
9	SPX1700FA	Drain Plug w/Gasket	1
10	SPX1500UNPAK	Union Connectors—Socket (2)	—
11	CLX200BS	Base	1

DIMENSIONS



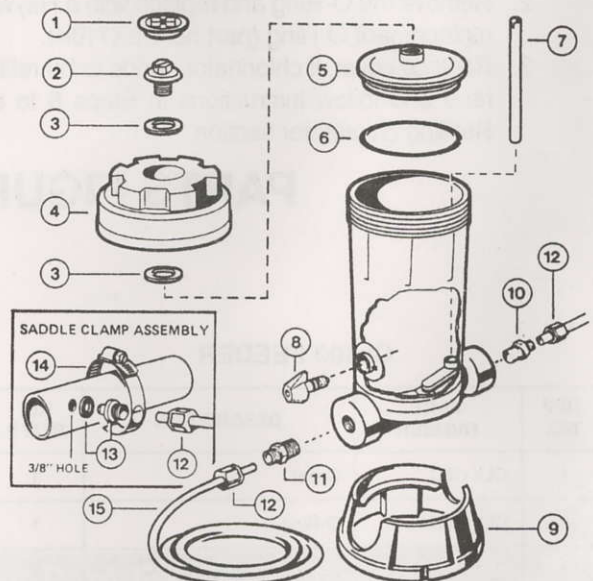
CL110 FEEDER

REF NO.	PART NUMBER	DESCRIPTION	NO. REQ'D
1	CLX100C	Cover	1
2	CLX110K	O--Ring	1
3	CLX110DA	Dial Flow Valve	2
4	CLX110B	Base	1
5	CLX220CV	Check Valve Assembly	1
6	CLX220H	Compression Nuts	4
7	CLX220G	Saddle Fitting	2
8	CLX220K	Saddle Clamp	2
9	CLX220J	Plastic Tubing—8 Ft.	1



CL220 SERIES

REF NO.	PART NUMBER	DESCRIPTION	NO. REQ'D
1	CLX200E	Logo Cap	1
2	CLX200G	Cover Retaining Screw	1
3	CLX200W	Slip Washer	2
4	CLX200C2	Cover Cap	1
5	CLX200B	Cover	1
6	CLX200K	O-Ring	1
7	CLX200H	Feeder Tube (some models)	1
8	CLX200PA	Control Valve Assembly	1
9	CLX220B	Base	1
10	CLX220CV	Check Valve Assembly	1
11	CLX220D	Inlet Fitting Adapter	1
12	CLX220H	Compression Nuts	4
13	CLX220G	Saddle Fitting	2
14	CLX220K	Saddle Clamp	2
15	CLX220J	Plastic Tubing—8 ft.	1



Hayward Pool Products Worldwide Locations



Hayward Corporate Headquarters/Hayward Pool Products, Inc., 900 Fairmount Avenue, Elizabeth, NJ 07207, USA Tel: 908-351-5400, Fax: 908-351-5675
 Hayward Pool Products, Inc., 2875 Pomona Boulevard, Pomona, CA 91768, USA, Tel: 909-594-1600, Fax 909-598-6905
 Hayward Pool Products, Canada, Inc., 2880 Plymouth Drive, Oakville, Ontario, CANADA, L6H 5R4, Tel: 905-829-2880, Fax: 905-829-3636
 Hayward Pool Products Europe, Parc Industriel de la Plaine de L'Ain, Allée Des Chênes 01150, Saint Vulbas, FRANCE, Tel: 33-4-74-46-24-70, Fax: 33-4-74-46-24-87
 Hayward Iberica S.A., Carretera nacional III, KM 333, 7 Nave 2, E-46930 Quart De Poblet, Valencia, SPAIN, Tel: 34-6-152-3454, Fax: 34-6-152-3357
 Hayward/IMG, International Marketing Group, 2875 Pomona Boulevard, Pomona, CA 91768, USA, Tel: 909-594-1600, Fax: 909-598-6905

NOTES

INSTALLATION, OPERATION AND OPERATING INSTRUCTIONS

AUTOMATIC CHLORINE FEEDERS

HAYWARD CL200110 SERIES

HAYWARD CL200120 SERIES

WARNING

INSTALLATION INSTRUCTIONS

- 1. Read and follow all safety instructions and warnings on the product's label.
- 2. Do not use the unit in any area where it may be exposed to direct sunlight.
- 3. Make sure you use the correct wiring when connecting to the existing line.
- 4. Do not make turns from the pipe to the chlorine container.
- 5. Do not use the unit in any area where it may be exposed to direct sunlight.

INSTALLATION

WARNING

- 1. This chlorine feeder is designed to be used with Hayward automatic chlorine dispensers only.
- 2. Always use the correct wiring when connecting to the existing line.
- 3. Do not use the unit in any area where it may be exposed to direct sunlight.



Hayward Pool Products Worldwide Locations

**Hayward Corporate Headquarters
Hayward Pool Product, Inc.**
900 Fairmount Avenue
Elizabeth, NJ 07207, USA
Tel: 908-351-5400
Fax: 908-351-5675

Hayward Pool Products, Inc.
2875 Pomona Boulevard
Pomona, CA 91768, USA
Tel: 909-594-1600
Fax: 909-598-6905

**Hayward Pool Products,
Canada, Inc.**
2880 Plymouth Drive
Oakville, Ontario, CANADA, L6H 5R4
Tel: 905-829-2880
Fax: 905-829-3636

Hayward Pool Products Europe
Parc Industriel de la Plaine de L'Ain
Altée Des Chênes
01150 Saint Vulbas
FRANCE
Tel: 33-4-74-46-24-70
Fax: 33-4-74-46-24-87

Hayward Iberica S.A.
Carretera nacional III, KM 333, 7 Nave 2
E-46930 Quart De Poblet
Valencia, SPAIN
Tel: 34-6-152-3454
Fax: 34-6-152-3357

Hayward/IMG
International Marketing Group
2875 Pomona Boulevard
Pomona, CA 91768, USA
Tel: 909-594-1600
Fax: 909-598-6905