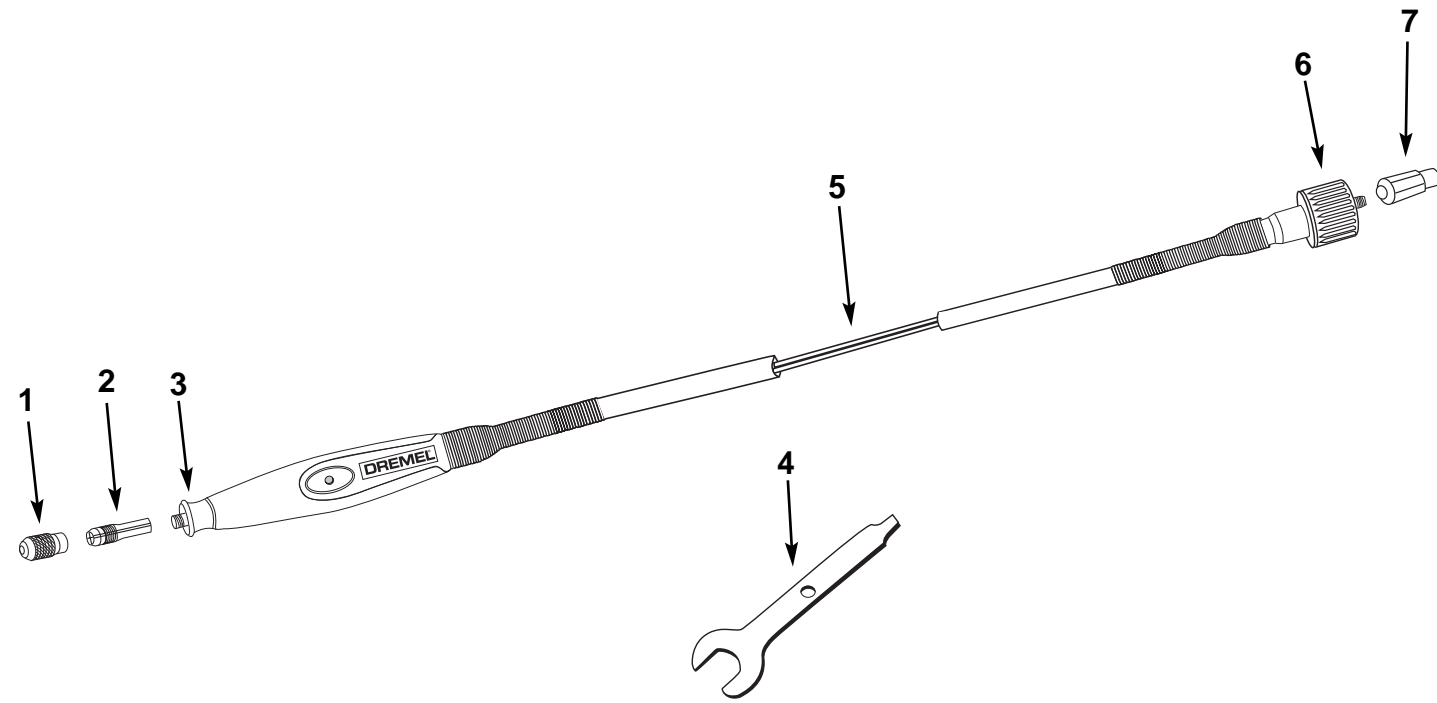


DREMEL®

Flex-Shaft Attachment Instructions Model 225



ORDER BY PART NUMBER, NOT CODE NUMBER
COMMANDEZ PAR NUMÉRO DE PIÈCE ET NON PAR NUMÉRO DE CODE
PIDA POR NÚMERO DE PIEZA, NO POR NÚMERO DE CÓDIGO

CODE NO.	PART NO.	DESCRIPTION
1	2615297355	Collet Nut (Not included)
2	480	1/8" Collet available as Accessory (Not included)
	481	3/32" Collet available as Accessory (Not included)
	482	1/16" Collet available as Accessory (Not included)
	483	1/32" Collet available as Accessory (Not included)
3	2610914373	Handpiece Cap
4	90962	Wrench Available as Accessory (Not included)
5	2610914543	Flexible Shaft Core
6	2610915085	Overthrow Nut Assembly
7	529417870	Driver Cap

NO. DE CODE	NO. DE PIÈCE	DESCRIPTION
1	2615297355	Écrou de mors (fourni séparément)
2	480	Mors de 3,2 mm (1/8 po), accessoire fourni séparément
	481	Mors de 2,4 mm (3/32 po), accessoire fourni séparément
	482	Mors de 1,6 mm (1/16 po), accessoire fourni séparément
	483	Mors de 0,8 mm (1/32 po), accessoire fourni séparément
3	2610914373	Tapa del Mango
4	90962	Clé accessoire (fournie séparément)
5	2610914543	me d'arbre flexible
6	2610915085	Conjunto de tuerca
7	529417870	Capuchon moteur

NO. DE CÓDIGO	NO. DE PIEZA	DESCRIPCION
1	2615297355	Tuerca del portaherramienta (no incluida)
2	480	Portaherramienta de 1/8" disponible como accesorio (no incluido)
	481	Portaherramienta de 3/32" disponible como accesorio (no incluido)
	482	Portaherramienta de 1/16" disponible como accesorio (no incluido)
	483	Portaherramienta de 1/32" disponible como accesorio (no incluido)
3	2610914373	Chapeau de la pièce manuelle
4	90962	Llave de tuerca disponible como accesorio (no incluida)
5	2610914543	Núcleo del eje flexible
6	2610915085	Ensemble d'écrou de renversement
7	529417870	Tapa del impulsor

Safety Rules for Flex-Shaft

WARNING Read and understand the tool manual and these instructions for the use of this accessory with your tool. Failure to follow all instructions listed below may result in serious personal injury.

Wear ANSI compliant eye protection. The operation of any power tool can result in foreign objects being thrown into the eyes.

Do not operate the flexible shaft with a sharp or multiple bends. Over bending the shaft can generate excessive heat on the jacket or hand piece and may cause the flexible shaft to disengage from tool. The minimum recommended bend radius is 5"

Always hold the hand piece firmly in your hands during the start-up. The reaction torque of the motor, as it accelerates to full speed, can cause the shaft to twist.

Not for use with router bits or other large diameter cutting bits. Large diameter cutting bits can cause kickback and loss of control when used with the flexible shaft.

Do not remove end ferrule while tool is running. The cable will become loose from the jacket and will uncontrollably whip or lash around.

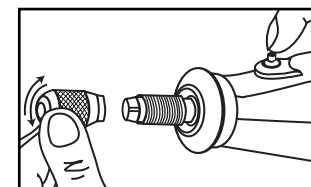
Attachment for use with Dremel Rotary Tool Models 275, 285, 395, 398 & 780.

Installation Instructions

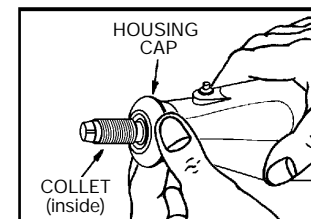
It is extremely important to carefully read and follow the directions to assemble the flex-shaft to your rotary tool below to ensure the tool will function properly.

To properly attach the flex-shaft to the rotary tool, THREE items must be removed from the tool: the housing cap, collet nut and collet.

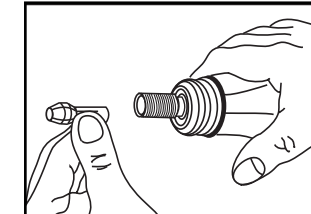
Step 1. Press the Shaft lock button, unscrew and remove the collet nut.



Step 2. Unscrew the housing cap from the tool.

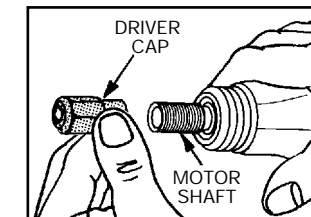


Step 3. Remove the collet.



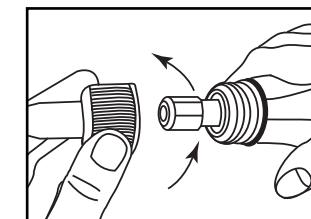
Note: If the collet nut and collet are not removed from the motor shaft, the tool will not function properly.

Step 4. Install the driver cap on the motor shaft and tighten.



CAUTION To prevent damage to tool, do not overtighten driver cap. Tighten the driver cap finger tight and then tighten an additional 1/3 turn with the wrench. (Wrench included with your rotary tool kit)

Step 5. Attach by screwing the collar of the flex-shaft to the rotary tool. Make sure the square end of the center core engages the square hole socket in the driver cap.



CAUTION Do not pull out center core to engage into driver cap.

This could cause disengagement of center core from handpiece. If tool stops when shaft is bent, center core may be lodged in driver cap. Loosen shaft and remove core from driver cap. Then screw flexible shaft onto rotary tool housing again.

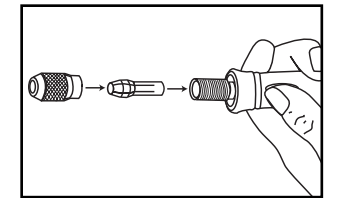
Operating Instructions

Disengagement of the Flex-Shaft

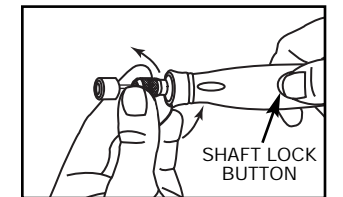
The flexible shaft may become disengaged if the motor of your rotary tool is not elevated higher than the working end of the flex-shaft. The #2222 Rotary Tool Stand is recommended to hold the rotary tool at the proper height.

Collet and Accessory Assembly

The collet assembly consists of a collet nut and collet. Take the collet nut and collet that were removed from your tool in step 2 and 3 and insert them into the tip of the flex-shaft handpiece.



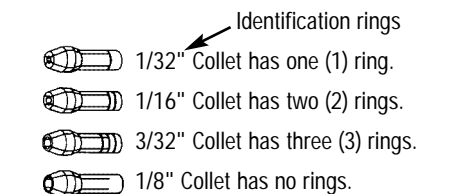
Insert an accessory or bit as deeply as possible to avoid wobble during use. With the shaft lock button engaged on the flex-shaft handpiece retighten the collet nut.



Collet Removal and Replacement

Four different size collets to accommodate different shank sizes, are sold separately for your flex-shaft. To install a different collet, remove the collet nut and remove the old collet. Insert the unslotted end of the collet in the hole in the end of the flex-shaft. Replace collet nut on the shaft. Always use the collet which matches the shank size of the accessory you plan to use. Never force a larger diameter shank into a collet.

Collet Identification Chart – Collet sizes can be identified by the rings on the back end of collet.



AVAILABLE COLLETS			
Model No.	Size	Model No.	Size
480	1/8"	482	1/16"
481	3/32"	483	1/32"

Flexible Shaft Lubrication

CAUTION The flex-shaft should be lubricated after every 25-30 hours of use. To lubricate, unscrew the flex-shaft assembly from the motor housing. Pull the center core out of the flex-shaft assembly. Wipe a very thin film automotive wheel bearing grease on to the center core and reinsert it back into the shaft. To prevent damage to tool do not over grease shaft. Too much grease will cause the unit to overheat.

Reattach the flex-shaft to the rotary tool.

Contents of 225 Flex-Shaft Attachment

Qty.	Description
1	Flex-Shaft Assembly (42" long)
1	Driver Cap